

**Eurodec**  
Rubber Promenade Tiles

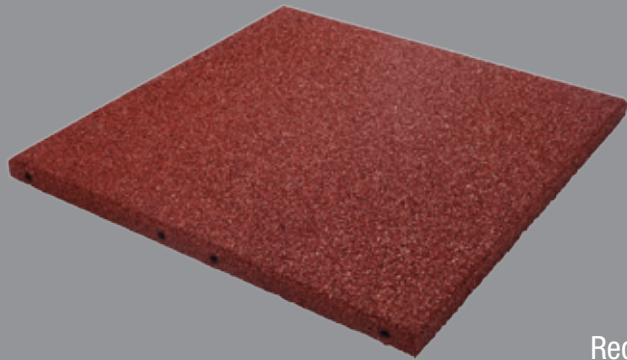
SWIMMING POOLS

BALCONIES

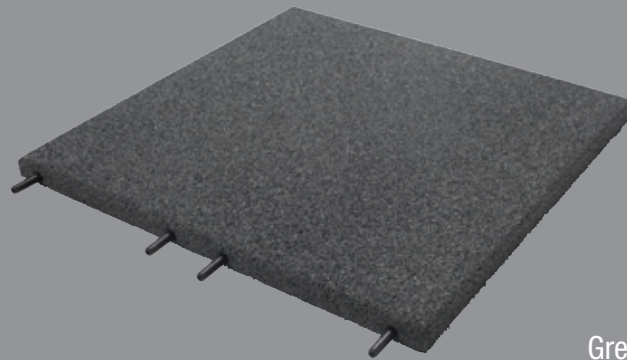
TERRACES

WALKWAYS

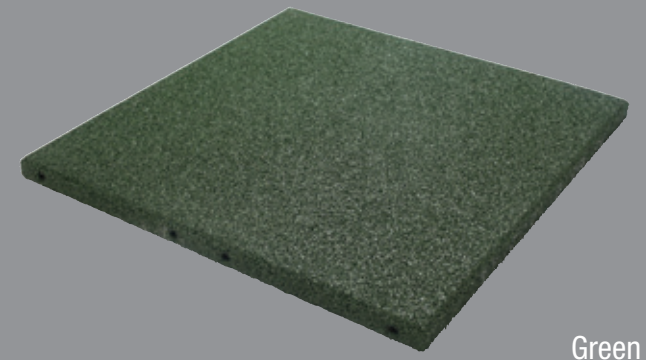
[www.eurodec.uk.com](http://www.eurodec.uk.com)



Red



Grey



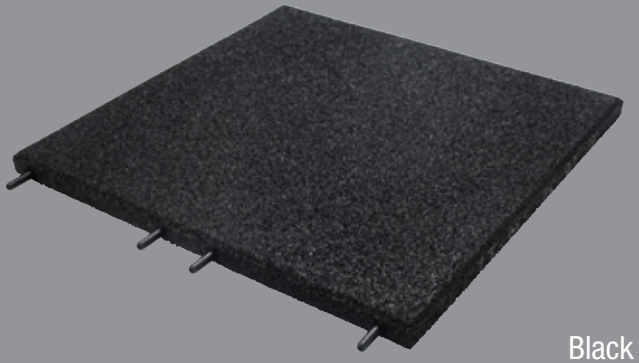
Green

Eurodec Premier Rubber Tiles are specifically designed to be loose laid on balconies, terraces and roof gardens. They are compatible with most flat roof substrates including felt, asphalt, single ply, EPDM and fibre glass. The tiles are available in a number of different colours which can be mixed and matched to create laying patterns and eye-catching combinations. The textured surface provides a high degree of anti-slip protection whilst the rubber composition offers excellent noise deadening and thermal insulation properties. In addition the product has a critical fall height of 1m making it a safe option for areas frequented by children and the elderly.

Rainwater drains quickly and efficiently through the product due to its porous nature. Drainage channels located on the reverse of the tile then direct the water to outlets reducing the problem of standing water. Unlike rubber tiles with pointed egg-box shaped backing the underside is flat. This prevents point-loading which can cause indentations when laid on asphalt substrates. Manufactured to the highest European technical standards using top quality recycled rubber granulate, polymer binders and iron oxide pigments the tiles are environmentally friendly and sustainable.

Installation is quick and straight-forward making this the perfect product for DIY enthusiasts. The tiles interlock using integrated connector pins located on the sides. This stops displacement and buckling associated with adhered systems. The tiles are also available with a protective fleece backing for use on PVC single ply membranes.

**Samples available on request**



Black

- Easy to install.  
Four integrated connector pins – reduces labour costs.
- Anti-Slip and quick draining.  
With underside drainage channels.
- Accoustic insulating properties.  
Deadens noise from foot traffic.
- Enviromentally friendly.  
Manufactured from recycled materials.
- Thermal insulation.
- Safe and comfortable to walk on even with bare feet.
- Exended life span.  
Frost proof, will not crack or rot.

## Installation

Prior to installing tiles please ensure the deck is level, free draining and suitable to receive rubber tiles.

Begin laying the tiles in a corner of the area intended to be covered, make sure the pins are facing the direction of installation. After the first row has been laid check the alignment is correct before continuing. Every second row must be laid in a brick-bond pattern leaving a half tile at each end. This will result in an interlocking formation to maximize the overall bond.

The tiles can be cut with a low-speed jig-saw (medium sized teeth), handsaw or Stanley-knife. It is recommended a steel straight edge is used for best results. Wet the cutting blade where possible.

Exposed edges which may be subject to wind uplift can be adhered to the substrate using Eurodec PU Adhesive ensuring a 2mm gap is left between tiles and the adhesive bead does not block the drainage channels. A 24 hour period should be allowed before the tiles are trafficked.

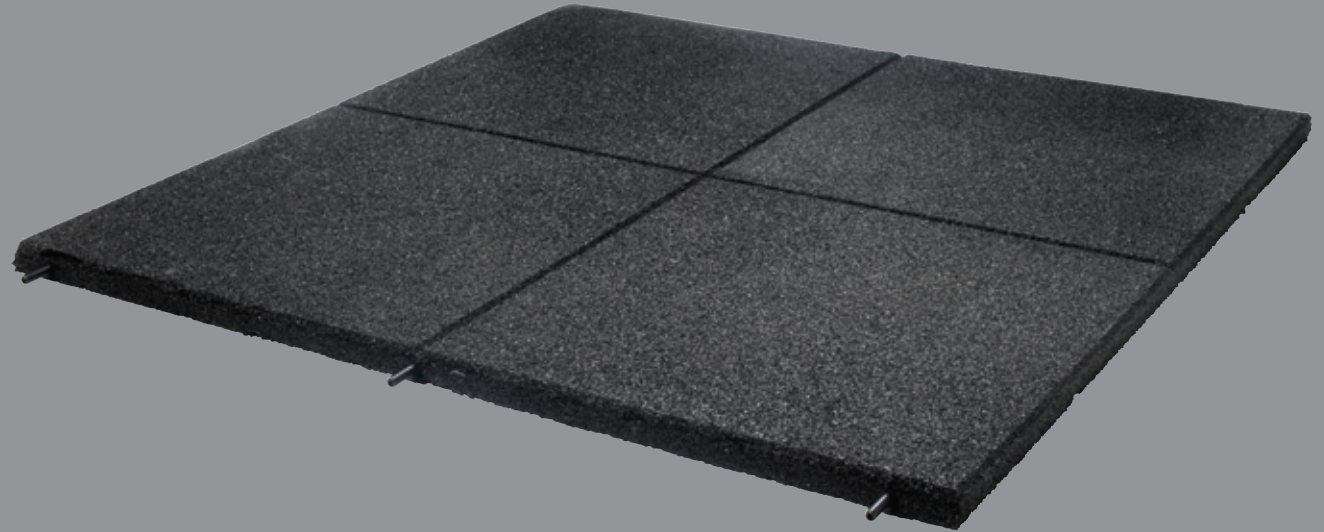
## Maintenance

Removal of loose dust, dirt or other foreign matter can be achieved by the use a soft-bristled broom or a heavy-duty vacuum cleaner (ensuring the mechanical drive brush is soft enough to avoid damage to the tile surface). To remove dirt, moss, foods etc, scrub with a soft brush using warm water and a highly diluted detergent. Then rinse well with copious amounts of clean water.

Pressure washers can be used to clean tiles. A minimum distance of 35cm must be maintained between the spray nozzle and tile surface to prevent impact pressure, ensure the water temperature does not exceed 80°C. After cleaning, remove all contaminants that may have exuded from the tiles. Scrub with a soft brush and warm water with a highly diluted detergent then rinse well with copious amounts of clean water.

Eurodec Commercial Rubber Tiles are designed for use on commercial walkways and maintenance routes. Each tile is 1m<sup>2</sup>. Installation with the integrated connector pins is quick and easy resulting in reduced labour requirements.

Available in black the tiles can also be individualized with edge demarcation, directional arrows and hazard marking to comply with Health & Safety regulations. A geotextile-fleece backed version is available for PVC single ply membranes.



**95% Recycled Product**

## **Eurodec**

14 The Tythings Commercial Centre  
Southgate Road  
Wincanton  
Somerset  
BA9 9RZ

Tel: 01963 33940

Fax: 05603 109 740

Email: [sales@eurodec.uk.com](mailto:sales@eurodec.uk.com)

[www.eurodec.uk.com](http://www.eurodec.uk.com)

### Technical Information

<b>Premier Rubber Tile Dimensions</b>	500 x 500 x 30mm (4 tiles per m <sup>2</sup> )
<b>Premier Rubber Tile Weight</b>	5kg per tile (20kg per m <sup>2</sup> )
<b>Commercial Rubber Tile Dimensions</b>	1010 x 990 x 30mm (1 tile per m <sup>2</sup> )
<b>Commercial Rubber Tile Weight</b>	5kg per tile (20kg per m <sup>2</sup> )
<b>Composition</b>	Pigmented polyurethane bound rubber granulate
<b>Fire Resistance</b>	B2 (DIN 4102 Part 1)
<b>Slip Resistance</b>	72 Dry 64 Wet – Low potential for slip (P.S.T)
<b>Critical Fall Height</b>	1 metre
<b>Chemical Resistance</b>	Conditionally resistant to acids and bases
<b>Cold Fracture Resistance</b>	24 h / -40°C No fracture